

EMS

EVOKE MAINTENANCE SERVICES

20

YEARS ON SITE

*Two decades of excellence in delivery across
mines, port, rail and beyond*

— CAPABILITY STATEMENT

2026



“

From *concept* to
completion. We deliver
projects. Not just labour.

DOCUMENT CONTROL EMS CAPABILITY STATEMENT 2026

VERSION

1.0 *2026*

APPROVED BY

Jonathon Drayton

ISSUED TO

Prospective clients & project partners

REVIEW CYCLE

Quarterly

ENQUIRIES

admin@emsaustralia.net

OFFICE

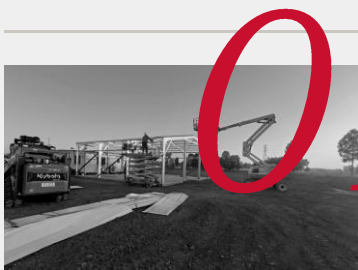
Mackay, QLD





In this document

Contents.



01

About EMS *Who we are*

Who we are · What sets us apart · Our people · Values

04

P.



02

Our capability *What we deliver*

Civil construction & mining · Rail corridor works · Asset protection · Conveyor install & maintenance · Vac truck & pumping · Vegetation management · Underground specialties · Innovative solutions

12

P.



03

How we work *Plan · mobilise · deliver*

Safety starts with family · Case studies of our work · Our fleet & maintenance

21

P.



04

Local matters *Beyond the gate*

Community involvement · Strategic partnerships · Local supplier commitment

39

P.



Section one

About EMS.

Evoke Maintenance Services is a Queensland-based civil and maintenance contractor delivering critical works for tier-1 mining, rail and infrastructure clients across the Bowen Basin and beyond.

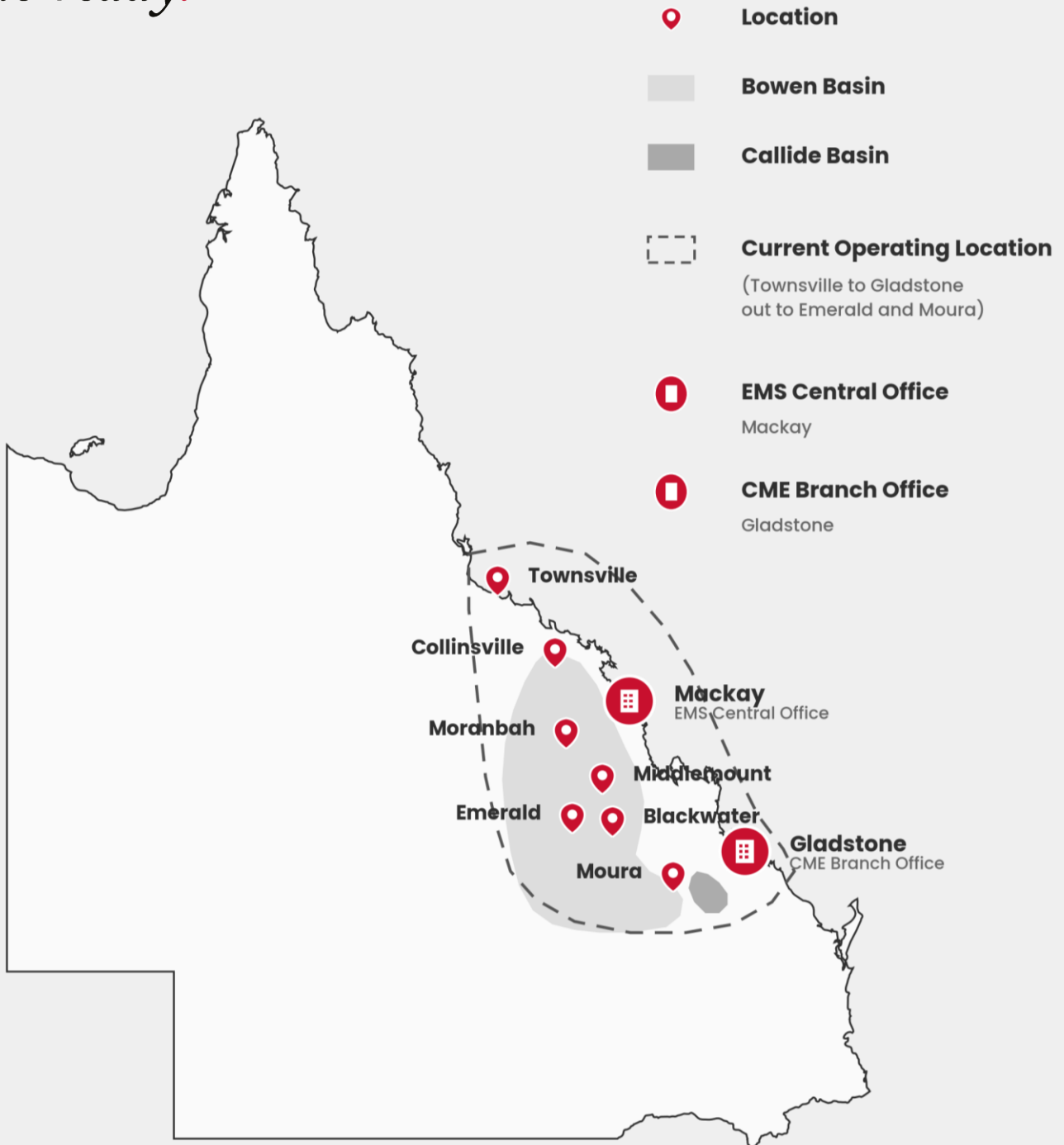
IN THIS SECTION

- i* Who we are
- ii* What sets us apart
- iii* Our people
- iv* Our values

From concept to completion, we deliver excellent results.

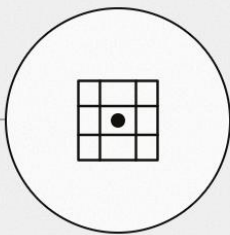
Queensland-
owned,
site-ready.

20.
years in the Bowen Basin



Four reasons clients engage *EMS to deliver*

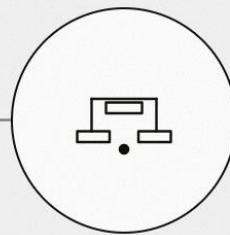
Every scope we take on is measured against these four outcomes. They shape the way we tender, plan, supervise and close out work – from a single concrete pour to a multi-stage civil package.



PLANNED



SUPERVISED



MINIMAL DISRUPTION



RELIABLE DELIVERY

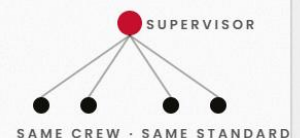
Planned *i*

Scope, sequence and supervision agreed in writing before mobilisation. No work starts on guesswork.



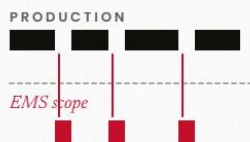
Supervised *ii*

The right supervisor for the scope and the shift. Same person on site, same standard, every day.



Minimal disruption *iii*

Programmed around your production windows, not against them. Live plant interface managed up front.



Reliable delivery *iv*

Documented daily. ITP, hold points and docketts handed back at close. Evidence that builds the next tender.



TENDER

PLAN

SUPERVISE

CLOSE OUT

Same four outcomes – every scope, every shift, every close-out.

The people who own the standard.

EMS is led by hands-on directors with decades of combined experience across coal, hardrock, civil and construction. The same people who quote your work are the ones standing on site when it gets built.



Brendan English

Business Development Director

DIRECTOR · EMS & EMS CME

Founder of EMS with 20 years across coal and hard rock mining. Background in electrical construction. Leads team management and long-term client strategy.



Jonathon Drayton

EMS Managing Director

DIRECTOR · EMS & EMS CME

Track record managing multi-million dollar mining and construction projects from conception to completion. Coordinates trades, engineers and architects.



Mick Finucan

EMS Construction Manager

DIRECTOR · EMS

Concrete form setter and steel fixer by trade. 15 years across civil, construction and mining. Owns delivery quality on the ground.



Jake Barber

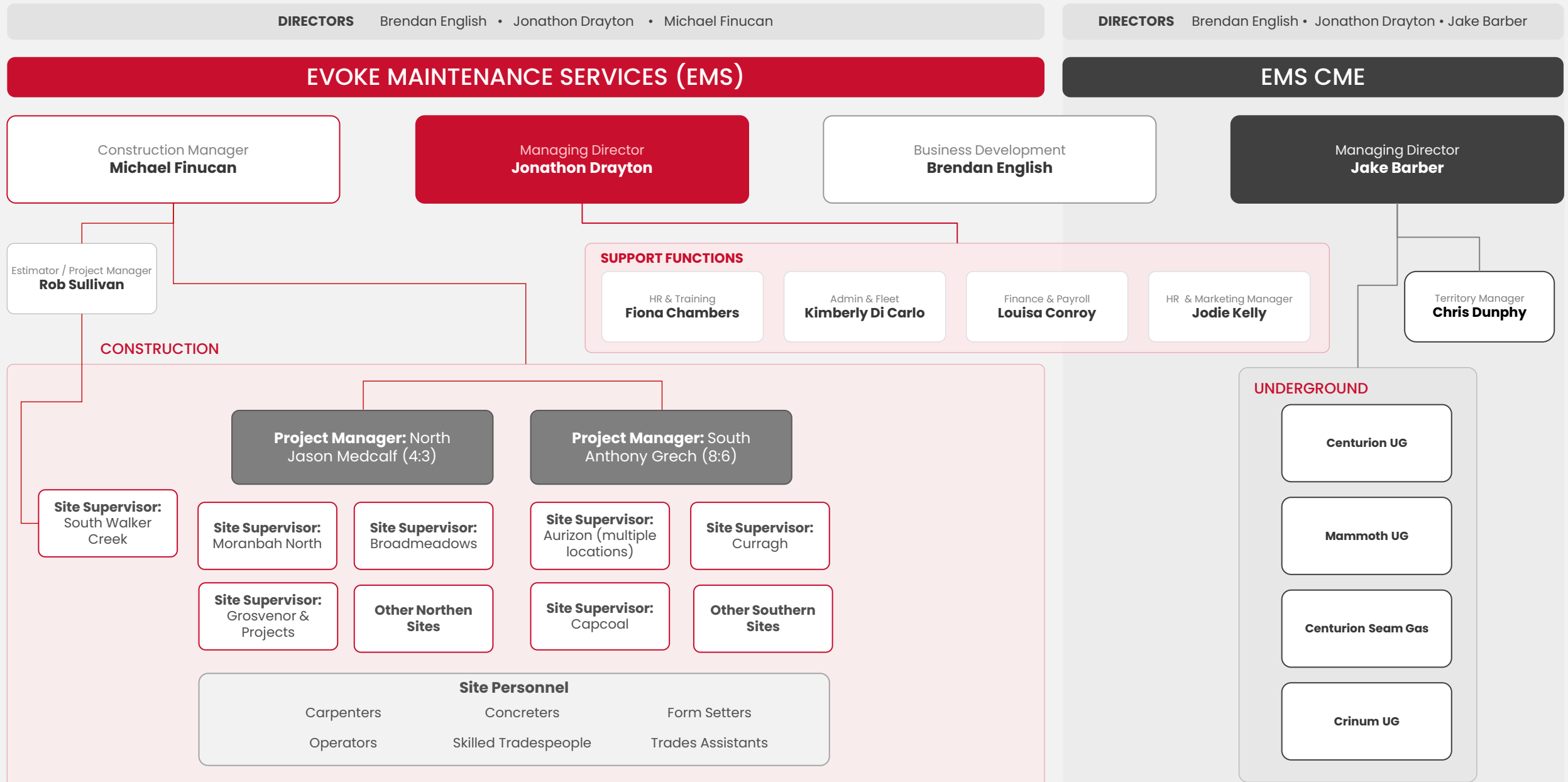
EMS CME Managing Director

DIRECTOR · EMS CME

20 years underground coal experience. Mechanical Engineering background.



ORGANISATION Two businesses *One Standard*



The people who *support our site success.*

Project managers, estimators, finance, HR and admin. The team that keeps every scope planned, resourced and supported – from the first phone call to the last document signed off.



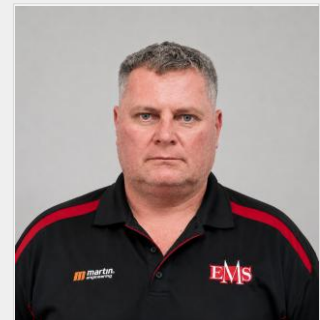
Jason Medcalf
Project Manager



Anthony Grech
Project Manager



Rob Sullivan
*Estimator · Project
Manager*



Chris Dunphy
Territory Manager



Fiona Chambers
HR & Training



Louisa Conroy
Finance



Kim Di Carlo
Fleet & Admin



Jodie Kelly
*HR & Marketing
Manager*

Our team values.

ONE TEAM

Shared values. Stronger together.

OWNERSHIP IMPROVEMENT DIVERSITY ALIGNMENT BALANCE ACCOUNTABILITY

Ownership

We take ownership of our actions and deliver on what we commit to.



Continuous Improvement

We learn, adapt and improve every day through feedback.



Shared Accountability

We hold each other to the standard, not just ourselves.



One Team

Shared values.
Stronger together.

OUR TEAM VALUES

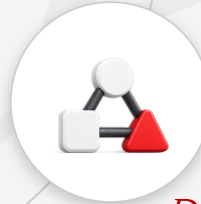
Balance

We communicate openly, support each other and build strength through our people.



Diversity

We value different perspectives and make better decisions.



Alignment

We pull in the same direction with shared goals and clear priorities on every job.



Not posters. How decisions get made when nobody's watching.



02

Section two

Our capability.

From civil construction and rail corridor works to vac trucks, conveyors and underground support – EMS delivers a broad, integrated scope across mining and infrastructure sites.

IN THIS SECTION

- | | | | |
|------------|-----------------------------|-------------|--------------------------------|
| <i>i</i> | Civil construction · mining | <i>ii</i> | Rail corridor works |
| <i>iii</i> | Asset protection | <i>iv</i> | Conveyor install & maintenance |
| <i>v</i> | Vac truck & pumping | <i>vi</i> | Vegetation management |
| <i>vii</i> | Underground specialties | <i>viii</i> | Innovative solutions |

Eight speciality streams across mining, rail, port, and civil.



Civil construction for mining, rail, port & industry

We deliver practical civil construction across mining, rail, port, commercial and industrial environments: large-scale concreting, formwork, carpentry, minor civils, site infrastructure, repairs and project support, backed by experienced supervisors and site-ready crews.



i

Large-scale concreting

Concrete works for operational, industrial and infrastructure environments where quality and timing matter.

Pours · Slabs · Pads & plinths · Footings · Bunds · Hardstands



ii

Formwork & carpentry

Practical carpentry and formwork supporting concrete, civil and site infrastructure projects.

Formwork · Boxing · Set-out · Reinforcement support · Temporary works



iii

Mine, rail & port infrastructure

Civil construction support where access, compliance and site coordination are critical.

Mine infrastructure · Rail corridor · Ports · Access roads · Shutdowns



iv

Commercial & industrial works

General civil and commercial support for site needs, asset improvements and upgrades.

Commercial concrete · Industrial flooring · Walkways · Minor structures · Repairs

Large-scale delivery

Concrete, formwork and civil works for operational sites.

Site-ready crews

Supervisors and trades experienced in industrial settings.

Practical planning

Clear scopes, safe execution and coordinated delivery.

Flexible support

Capability across mine, rail, port and commercial works.





Rail corridor works that keep operations moving

We support rail corridor works across mining, civil and industrial environments: practical site-based services that maintain safe access, asset condition and operational continuity, delivered by crews who understand planning, supervision and compliance around live and controlled work areas.

i

Rail access & corridor maintenance

Maintaining access ways, work areas and corridor conditions for safe movement and inspection.

Access clearing · Trackside support · Drainage & culverts · Laydowns

ii

Rail infrastructure support

Civil and trade-based support for infrastructure works, minor repairs and site preparation.

Formation · Minor civils · Concrete pads & plinths · Drainage · Demarcation

iii

Replacement & shutdown support

Crew and equipment support for planned replacement, maintenance and shutdown works.

Replacement · Aluminothemic welding · Shutdowns · Materials handling

iv

Vegetation, firebreaks & protection

Keeping rail corridors clear, visible and accessible through vegetation control and protection.

Slashing · Brush cutting · Firebreaks · Fence lines · Drainage clearing

Safe access

Clear corridors, tracks and work areas.

Operational continuity

Support planned works with minimal disruption.

Site-ready crews

Teams familiar with controlled work areas.

Multi-service support

Civil, vegetation, concrete and asset support in one team.





Asset protection that extends service life

We help you maintain structural integrity, extend asset life and reduce long-term maintenance risk across mining, civil and industrial sites: concrete remediation, protective coatings, blast and paint, and site-based repairs, delivered with a focus on safety, durability and operational continuity.



Concrete remediation

Repairing damaged or compromised concrete to restore function, improve safety and extend service life.

Patching · Spalling · Crack treatment · Joints · Plinths, bunds & slabs



Protective coatings

Coating systems that protect assets from corrosion, wear, chemicals, moisture and exposure.

Epoxy · Anti-slip · Floor coatings · Sealers · Waterproofing · Chemical-resistant



Blast & paint services

Preparation and refinishing for asset preservation, corrosion control and site presentation.

Abrasive blasting · Profiling · Industrial painting · CHPP demarcation



Site-based asset repairs

Responsive repair support for fixed plant, infrastructure and operational areas.

CHPP areas · Bunds · Walkways · Pedestals · Drainage · Minor civils

Extend asset life

Repair and protect critical infrastructure and plant.

Reduce deterioration

Treat damage before it escalates into failure.

Safety & access

Address defects in operational and access areas.

Operational continuity

Plan and stage works around site requirements.





Conveyor installation & maintenance across surface and underground

We support conveyor installation, maintenance and mechanical works across surface and underground mining: planned shutdowns, maintenance campaigns, upgrades, component change-outs and site-based mechanical works, focused on safe execution and minimal disruption to operations.



Conveyor installation support

Installation and upgrade of conveyor systems, structures and associated infrastructure.

Installs · Structure assembly · Upgrades · Transfer points · Chutes & guarding



Conveyor maintenance & repairs

Practical maintenance to improve reliability, address defects and reduce operational risk.

Planned maintenance · Roller change-outs · Skirts · Guarding · Structural support



Mechanical works

Site-based mechanical support for conveyors, fixed plant and mining infrastructure.

Mechanical installs · Change-outs · Bolt-up · Alignment · Fabrication support



Shutdown & operational support

Crew and supervision support for outages, urgent works and production-critical windows.

Shutdowns · Labour & supervision · Workfront prep · Clean-up · Close-out

Surface & underground

Support across both operating environments.

Production-critical assets

Focused support for conveyor reliability and uptime.

Shutdown ready

Crews available for planned maintenance windows.

Mechanical support

Installs, repairs, change-outs and fixed plant works.





Vacuum excavation services – a new mining-spec fleet across QLD

We operate a brand-new mining-spec vacuum excavation fleet from our Paget, Mackay base: safe location of services, liquid-waste removal, industrial cleaning, bulk waste removal and 24/7 emergency spill response, trusted by mining, port and rail clients since 2006.



Vacuum truck services

Safe location of underground services, non-destructive digging and liquid-waste removal.

Service location · Non-destructive digging · Potholing · Liquid waste



Industrial vacuum solutions

Industrial cleaning, bulk waste removal and material recovery across plant and infrastructure.

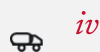
Industrial cleaning · Bulk waste · Material recovery · Pits & sumps



Emergency spill response

24/7 spill callout, hazardous waste handling and containment for mining, ports and rail.

24/7 callout · Hazardous waste · Containment · Clean-up



Compliant & site-ready

Brand-new mining-spec trucks and trained operators ready to mobilise to site.

Mining-spec · Trained operators · Inductions · Rapid mobilisation

24/7 response

Around-the-clock callout – mining, ports, rail.

Brand-new fleet

Mining-spec trucks ready to mobilise.

Mining-spec compliant

Trucks and operators built to industry standards.

Trusted since 2006

Vacuum excavation services across QLD since 2006.

Built for practical delivery in high-risk, high-output environments.





Vegetation management for safer, more accessible sites

We provide practical vegetation management to support safe access, site presentation, asset protection and operational continuity across mining, civil and industrial environments: delivered with a focus on planning, safety, environmental care and minimal disruption.



Access & site clearance

Clearing vegetation to support safe access for crews, vehicles, equipment and inspections.

Access tracks · Corridor control · Work-area prep · Laydowns · Drains



Slashing, mulching & brush cutting

Routine and project-based control to keep work areas safe, functional and presentable.

Slashing · Mulching · Brush cutting · Fence lines · Boundaries



Firebreaks & risk reduction

Vegetation reduction to manage fire risk, maintain clear zones and support emergency access.

Firebreaks · Maintenance · Asset perimeters · Emergency routes



Asset & infrastructure protection

Clearing around operational assets to support inspections, maintenance and protection.

Conveyors · Pumps & tanks · Buildings · Compounds · Drainage

Safe access

Clear tracks, corridors and work areas for crews and equipment.

Fire risk reduction

Maintain firebreaks and asset clear zones to manage risk.

Operational readiness

Prepare areas for maintenance, inspections and project work. Trucks and operators built to industry standards.

Local capability

Responsive crews with practical, on-site experience.





Underground support for safer, more reliable operations

We provide practical underground support across mining environments: secondary support, outbye works, conveyor support, mechanical assistance and site-based maintenance, delivered by crews who understand the planning, access controls, supervision and safety requirements of underground work.



Secondary support

Underground strata and infrastructure works with experienced crews, supervision and safe execution.

Installs · Mesh & bolts · Cable bolts · Rehab · Roadways



Outbye works & infrastructure

Support for underground infrastructure, access areas and non-production workfronts.

Outbye maintenance · Travel roads · Pumps · Ventilation access · Drainage



Underground conveyor support

Conveyor systems and associated infrastructure in underground operating environments.

Conveyor maintenance · Structures · Roller change-outs · Transfer points · Guarding



Mechanical & site-based support

Flexible underground support for maintenance teams, shutdowns and fixed plant areas.

Mechanical assistance · Change-outs · Fixed plant · Bolt-up · Materials

Underground ready

Crews familiar with controlled underground environments.

Practical support

Secondary support, outbye works and maintenance assistance.

Safe access focus

Work delivered with planning, supervision and site controls.

Flexible capability

Across conveyors, infrastructure and mechanical workfronts.

Practical underground support where safe access, reliability and execution matter.





Practical innovation for chronic site problems

We bring a practical, site-first approach to solving long-standing operational problems: combining broad experience across mechanical, electrical, surface, underground, rail, civil and maintenance work with strong industry networks and the ability to move quickly to improve safety, reliability and asset performance.



Chronic problem solving

Identifying root causes of recurring site issues and developing solutions for real operating environments.

Recurring defects · Bottlenecks · Reliability · Material handling · Access



Experience across disciplines

Practical experience across many environments – seeing connections narrower providers may miss.

Surface · Underground · Mechanical · Electrical · Rail · Civil · Conveyors



Networks & smarter sourcing

Trusted relationships to source fit-for-purpose solutions without unnecessary overheads.

Alternative supply · Equal-or-better quality · Faster sourcing · Lower overheads



Fast, nimble execution

Testing ideas, connecting the right people and moving from problem to practical delivery.

Rapid scoping · Supplier coordination · Pilots · Site trials · Mobilisation

Broad experience

Mechanical, electrical, rail, underground, surface and construction.

Trusted networks

Connections across suppliers, specialists and problem solvers.

Commercially smart

Solutions that reduce unnecessary cost and improve value.

Fast to act

Nimble, responsive and focused on workable outcomes.





Section three

How we work.

*A practical, repeatable approach to every job: **disciplined planning**, fast mobilisation and a focus on getting clients back into **production** with minimal disruption.*

IN THIS SECTION

- i* Safety starts with family
- ii* Case studies of our work
- iii* Our fleet and fleet maintenance

From concept to completion, we deliver excellent results.

Safety starts with *family.*

EMS is a family-built business. Many of our people work away from home: missing school mornings, birthdays, dinners and weekends. Our safety standard exists for one clear reason: **everyone gets home to the people who matter most.**

“

Behind every person on site is a family expecting them home.

EMS SAFETY BELIEF



HOME SAFE — CENTRAL QUEENSLAND



THE REASON WE PLAN EVERY JOB. EVERYONE GOES HOME.

HOW WE WORK · SAFETY

i

FAMILY

People we go home to. Safety is personal for our crews and our business.

ii

PEOPLE

Looking after our own. We value care, respect and speaking up early.

iii

SITE

Plant, PPE, plan. We set work up so crews deliver safely and confidently.

We plan carefully, speak up early and look after each other — so everyone goes home safely.

Zero harm, measured against the work we do.

0.00

TRIFR

2026 year-to-date – total recordable injury frequency rate.

Construction
NATIONAL

9.3

Mining
NATIONAL

6.7

EMS
EVOKE · YTD

0.00 everyone gets home safely

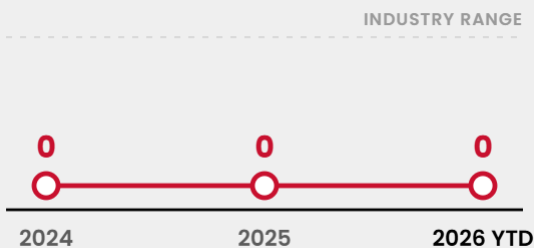
0 2 4 6 8 10

LOWER IS SAFER · CLAIMS PER MILLION HOURS WORKED

*Practical systems, visible leadership and continuous improvement – shown in numbers and set against **national industry** context.*

HOW WE WORK · SAFETY

Three years, *zero*



Recordable safety events, year on year. We have held the line at zero for three years running.

2026 incident summary YTD

0

LTIS
Lost-time injuries

0

MTIS
Medical-treatment

0

RECORDABLES
All categories

0

FATALITIES
Since inception

Every category, year-to-date – clean.

Zero is not a lucky number – it is the result of planning, supervision and speaking up early.

Case studies.

Ten projects where the work spoke for itself, across civil, asset protection, vegetation management, blast and paint, building installs and vacuum excavation.

— IN THIS SECTION

i **Critical Stabilisation Project.**

CIVIL · CONCRETE

ii **Pit G Portal Entry.**

CIVIL · UNDERGROUND

iii **Water Treatment Slab.**

CARPENTRY · FORMWORK

iv **Belt Recovery & Reuse.**

ESG · RECYCLING

v **Vegetation Management.**

VEGETATION

vi **Project Building Relocation.**

CIVIL · BUILDING

vii **Dawson South ERT Shed.**

CIVIL · STRUCTURAL

viii **Burton Blast & Paint.**

BLAST & PAINT

ix **Grosvenor Bathhouse Install.**

MULTI-TRADE

x **Vacuum Excavation Services.**

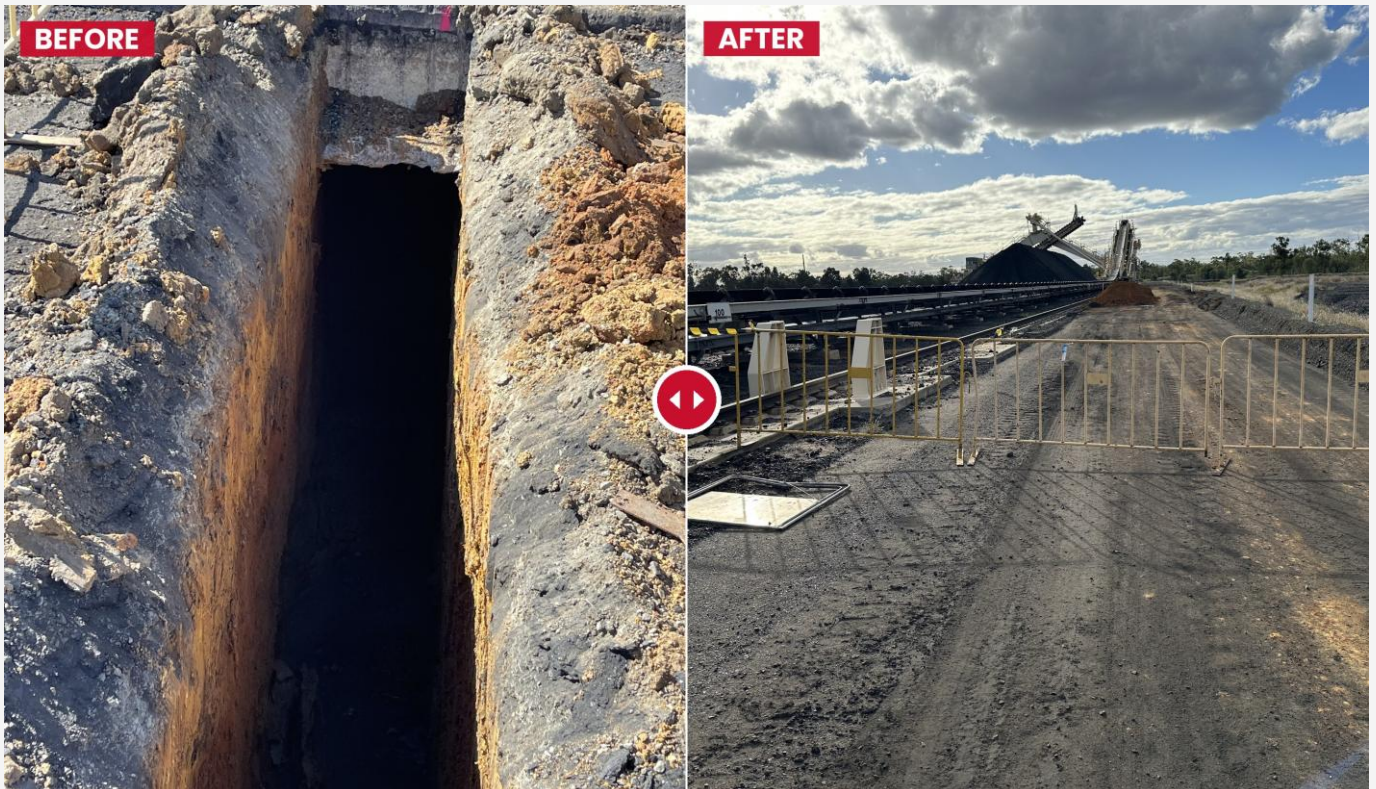
VACUUM EXCAVATION

— CASE STUDY · 01

Critical Stabilisation Project.

Subsidence rectification under a live coal stacker.

CLIENT **Anglo American** LOCATION **Moranbah, QLD**



CASE STUDY: MORANBAH

868m³

CONCRETE PLACED

14%

UNDER BUDGET

3,649

MAN-HOURS

0/0/0

FAC · MTI · LTI

i **THE CHALLENGE**

Sinking stacker · No downtime

- Stacker sinking along its rail track.
- 3 m work windows, every second pier.
- Live coal cycles — no downtime allowed.

ii **EMS RESPONSE**

Sequenced, low-risk delivery

- Staged 2 m excavation under the rail beam footing.
- 900 mm extension cast, every-second-pier sequencing.
- 40 MPa pours timed around live stacking cycles.

iii **VALUE DELIVERED**

Stabilised, on programme

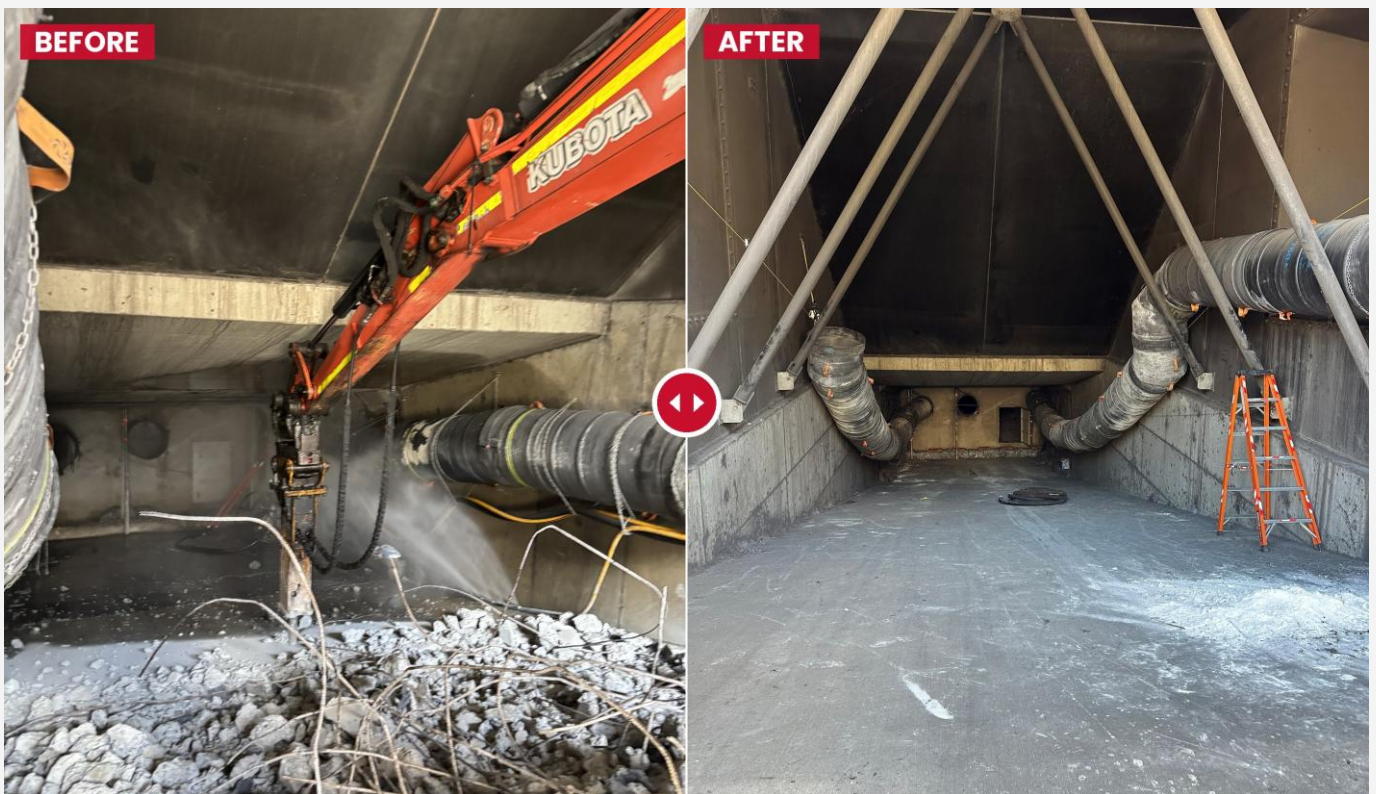
- 868 m³ of 40 MPa concrete placed.
- 14% under budget, on programme.
- Zero recordable safety events.
- Repeat scope awarded on adjacent Anglo assets.

— CASE STUDY · 02

Pit G second portal entry construction.

A second underground entry

CLIENT **Anglo American** LOCATION **Middlemount, Qld**



2nd

UG ENTRY / EXIT

1,500mm

BEAM DEPTH

T16piles

STRUCTURAL

Follow-on

AWARDED

i **THE CHALLENGE**

Production continuity, first-time spec

- Second UG entry/exit needed for production continuity.
- Pile caps and 1,500 mm deep beams under existing portal.
- Spec mix, epoxy injection — first-time accuracy required.

ii **EMS RESPONSE**

Engineered build, live access

- T16 pile caps installed under the existing portal.
- 1,500 mm beams cast with 32 mm bar, 80 mm blinder.
- Hanson PMP/40/20/80 mix to spec.

iii **VALUE DELIVERED**

Built to spec, repeat scope

- Second UG entry/exit delivered to specification.
- Repeat civil scope awarded on adjacent works.
- Same crew retained for follow-on portal works.

— CASE STUDY · 03

Water treatment circular slab.

Bespoke circular form, single pour window, finished to spec.

CLIENT **Clermont Mine** LOCATION **Water Treatment Plant, QLD**



CASE STUDY: CLERMONT

Critical

PATH SCOPE

Single

POUR WINDOW

0/0/0

FAC · MTI · LTI

Follow-on

AWARDED

i THE CHALLENGE

One pour window, bespoke circular form

- Large diameter slab on critical-path water treatment infrastructure.
- Single pour window — no opportunity to re-pour.
- Bespoke circular formwork had to be built right the first time.

ii EMS RESPONSE

Engineered build, supervised pour

- Pre-pour clean and base course preparation.
- Bespoke circular formwork built and set to spec.
- Reo install across the full slab diameter.
- Single supervised pour with machine finish.

iii VALUE DELIVERED

Built to spec, follow-on awarded

- Slab delivered to specification, on programme.
- Zero recordable safety events across the works.
- QA documentation handed back at completion.
- Repeat scope awarded on adjacent WTP works.

— CASE STUDY · 04

Conveyor belt recovery and reuse.

Turning end of life conveyor belting into practical site value.

SCOPE **Belt Recovery & Reuse** LOCATION **Collinsville and partner sites, QLD**



103

ROLLS RECOVERED

306t

DIVERTED FROM LANDFILL

0/0/0

FAC · MTI · LTI

ESG

ALIGNED

i **THE CHALLENGE**

End of life belting creates waste and risk

- Used belting creates storage and removal headaches.
- Landfill disposal carries cost and environmental impact.
- Belt change-outs leave messy sites with nowhere to send the rolls.
- Disposal pathways are often unclear, creating double handling and delays.

ii **EMS RESPONSE**

Belt recovery, recycling and reuse

- Removal and collection of waste belting during shutdowns and change-outs.
- Processing of belt material for industrial reuse.
- Repurposing into practical site and industrial applications.
- ESG-aligned reporting on diverted waste volumes.

iii **VALUE DELIVERED**

Cleaner sites, lower cost, circular outcome

- 103 rolls recovered — 306 tonne diverted from landfill.
- Support for ESG and sustainability targets.
- Cost-effective waste management alternative.
- Contribution to a practical circular economy.
- Tidier sites during major belt change-outs.

— CASE STUDY · 05

Single-pass vegetation management.

Single pass. No rework.

SCOPE **Vegetation Management** LOCATION **Callide Basin Mine, QLD**



Single

PASS

2× CTL

KUBOTA SVL73-3

0/0/0

FAC · MTI · LTI

BreatheSafe

CABS

i **THE CHALLENGE**

Regrowth across multiple zones, no rework window

- Brush and regrowth across mine infrastructure and rehab zones.
- Operating in MIA, haul roads, ROM pads, fuel farms and laydown areas.
- Operator dust and PM exposure to be managed at all times.

ii **EMS RESPONSE**

Purpose-built fleet, single-pass result

- Kubota SVL73-3 High Flow CTLs (×2), full RPM at the attachment.
- Mulcher, HD slasher and stick rake — gearbox-driven, chain-guarded.
- Spray trailers and brush cutters for tight-access detail work.
- BreatheSafe pressurised cabs with positive-pressure filtration.
- Current mining inductions held — site-ready crew.

iii **VALUE DELIVERED**

Cleared in one pass, fire-ready, safer cabs

- Single-pass mulching — no rework required.
- Firebreaks installed and rehab zones cleared.
- Zero recordable safety events across the works.
- Operator exposure minimised by sealed-cab filtration standard.
- Same crew available for follow-on regrowth campaigns.

— CASE STUDY · 06

Project building relocation.

Disconnect, transport, rebuild. Live mine site, repeat outcome.

CLIENT **Anglo American** LOCATION **Moranbah North, QLD**



CASE STUDY: MNC SIB
BUILDING RELOCATION

3-section

BUILDING RELOCATED

12x12m

GABLE AWNING

0/0/0

FAC · MTI · LTI

Follow-on

AWARDED

i **THE CHALLENGE**

Live site, fixed window, full rebuild

- Three-section project building to be moved across the MNC site.
- Live mine environment, fixed window, no rework allowed.
- Generator, electrical, plumbing and tie-downs all to be re-established.

ii **EMS RESPONSE**

Disconnect, transport, rebuild to spec

- Building disconnected, split into 3 sections and transported.
- Level concrete pads prepped and poured at the new location.
- Building re-erected, sealed and re-flashed water-tight.
- Cyclone tie-downs, 20,000L water tank and gable awning installed.

iii **VALUE DELIVERED**

Operational handback, follow-on awarded

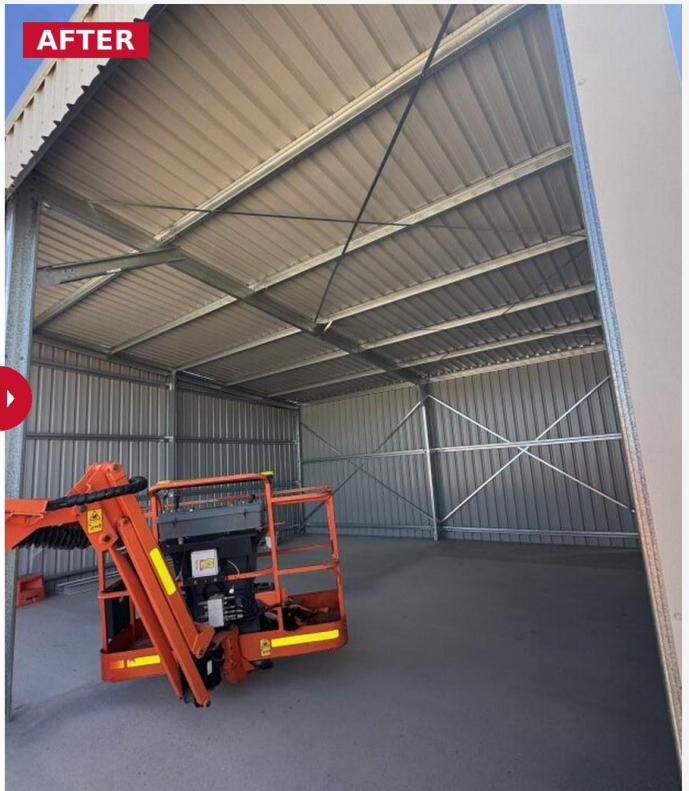
- Building back in service within the planned window.
- Zero recordable safety events across the works.
- 12 x 12m gable awning and water tank added as a site asset.
- Variation works absorbed without programme impact.

— CASE STUDY · 07

Emergency Response Training shed.

Skillion shed for emergency response training, slab to handover.

CLIENT **Anglo American · Dawson** LOCATION **Moura, QLD**



CASE STUDY: DAWSON SOUTH ERT SHED

8 x 8.2m

SKILLION SHED

6 piers

+ 100mm SLAB

0/0/0

FAC · MTI · LTI

Follow-on

AWARDED

i THE CHALLENGE
Civil, structural and electrical, one delivery

- New ERT training facility needed on a live mine site.
- Civil, structural and electrical scopes under one job.
- Tight footprint between existing buildings and services.

ii EMS RESPONSE
Piers, slab, skillion and power to spec

- 6 reinforced concrete piers, 450 dia x 900 deep installed.
- 100mm slab poured with single layer SL82 mesh.
- 8 x 8.2m skillion frame and roof supplied and erected.
- Electrical run from existing board for lights and trickle feed.

iii VALUE DELIVERED
ERT facility delivered, follow-on awarded

- ERT shed delivered to specification, on programme.
- Zero recordable safety events across the works.
- Single contractor for civil, structural and electrical.
- QA documentation handed back at completion.

— CASE STUDY · 08

Burton blast and paint.

Ongoing structural blast and paint, in-situ and yard, monthly call-off.

CLIENT **Bowen Coking Coal** LOCATION **Burton Mine, QLD**



CASE STUDY: BURTON
BLAST & PAINT

Monthly

CALL-OFF SCOPE

8/6

ROSTER

0/0/0

FAC · MTI · LTI

Follow-on

AWARDED

i **THE CHALLENGE**

Live coal-handling assets, rolling refurb

- Live coal-handling assets needing rolling refurb.
- Corroded structural steelwork and coating breakdown.
- Site access around production, no rework allowed.
- Containment of blast media in a live plant environment.

ii **EMS RESPONSE**

Encapsulate, blast, repair, recoat

- Encapsulation with brattice to contain media and dust.
- Abrasive blast of structural steel and crusher components.
- Inspect, mark-up and repair defective steelwork.
- Apply protective coating system to spec.
- EMS-owned compressors, blast and paint plant on site.

iii **VALUE DELIVERED**

Asset life extended, repeat scope held

- Coal-handling asset life extended.
- Zero recordable safety events across the works.
- Encapsulation kept media and dust off live plant.
- Repeat blast and paint scopes awarded.

— CASE STUDY · 09

Mine Bathhouse supply & install.

Modular bathhouse delivered end to end. Civil, structural, plumbing and fit-off.

CLIENT **Anglo American** LOCATION **Moranbah, Qld**



CASE STUDY:
GROSVENOR BATHHOUSE

Live site NO SHUTDOWN	95 posts + 64Lm WALKWAY	0/0 MTI · LTI	Follow-on AWARDED
---------------------------------	-----------------------------------	-------------------------	-----------------------------

<p><i>i</i> THE CHALLENGE <i>Live site, multi-trade, no rework</i></p> <ul style="list-style-type: none"> Footprint sat over live underground services. Fire main needed relocating to AS spec. Multi-trade scope, single contractor. Inclement weather across the build. 	<p><i>ii</i> EMS RESPONSE <i>Civil, structural, plumbing, fit-off</i></p> <ul style="list-style-type: none"> Hydro-ex to locate live services. Fire main relocated outside footprint. 95 posts and PFC supports installed. Modules craned in and fitted off. Plumbing and fire connections completed. 62Lm walkway and ramps installed. 	<p><i>iii</i> VALUE DELIVERED <i>Bathhouse operational, follow-on awarded</i></p> <ul style="list-style-type: none"> Bathhouse delivered and operational. Zero recordable safety events. Single contractor across all trades. QA pack and engineer sign-offs handed back. Repeat scope awarded
--	--	--

— CASE STUDY · 09 · GALLERY

Mine Bathhouse supply & install.

Scope of works in photos.



Crannage



Footings · 95 posts



Sewer install



Stormwater



Walkway prep



Walkway · final



Shower fit-off



Completed

CASE STUDY:
GROSVENOR BATHHOUSE

— CASE STUDY · 10

Vacuum excavation services.

Brand-new mining-spec fleet, ready to deploy across Queensland.

SERVICE **Vacuum Excavation** BASE **Paget, Mackay, QLD**



VACUUM EXCAVATION

24/7

RESPONSE

Brand-new

FLEET

Mining-spec

COMPLIANT

Since 2006

IN MARKET

i **VACUUM TRUCK SERVICES**

- Non-destructive digging around live services.
- Safe and efficient service location.
- Liquid-waste pump out and removal.
- Mining-spec trucks and operators.
- Compliant to the highest industry standards.

ii **INDUSTRIAL VACUUM SOLUTIONS**

- Industrial cleaning of plants and sites.
- Sump and pit cleaning, mining and ports.
- Debris and bulk waste removal.
- Conveyor and processing area clean-downs.
- Trained crews mobilised from Mackay base.

iii **EMERGENCY SPILL RESPONSE**

- 24/7 emergency callout.
- Spill response and clean-up.
- Hazardous waste handling and containment.
- Suited to mining, ports and rail sites.
- Trusted by industry since 2006.

fleet

Plant & Equipment

An integrated plant inventory – earthmoving, lift, transport, power and support. Maintained under a documented system.

– IN THIS SECTION

i
An integrated project delivery fleet.
28 plant items · 8 equipment classes

ii
Maintained, compliant, mine-gate ready.
Pre-starts · servicing · compliance · records

An integrated *project delivery fleet.*

Owned and operated. Site-ready and audit-recorded. Our plant inventory spans earthmoving, lift, transport, power and support – backed by EMS-numbered assets, daily pre-starts and scheduled servicing aligned to mine-gate standards.



i **Excavators**
SK210LC 20 t · SK140 16 t ·
Kubota 8 t and 5 t ·
Hitachi 5 t.



ii **Skid steers**
Kubota SVL75-2 · JCB
155HD · Case 310B ·
Kubota Hi-Flo.



iii **Lift**
EWP AJ450 boom lift ·
JCB telehandler.



iv **Trucks**
Fuso FV54 heavy tipper ·
Isuzu NPS 75-155 ·
vacuum truck.



v **Trailers**
Concrete 16×8 · Titanium
flatbed · tandem tag ·
8×5 cage.



vi **Power & air**
100 kVA · 20 kVA · 9 kVA
gensets · Atlas
compressor.



vii **Light vehicle**
Hilux · Mine-spec fit-out.



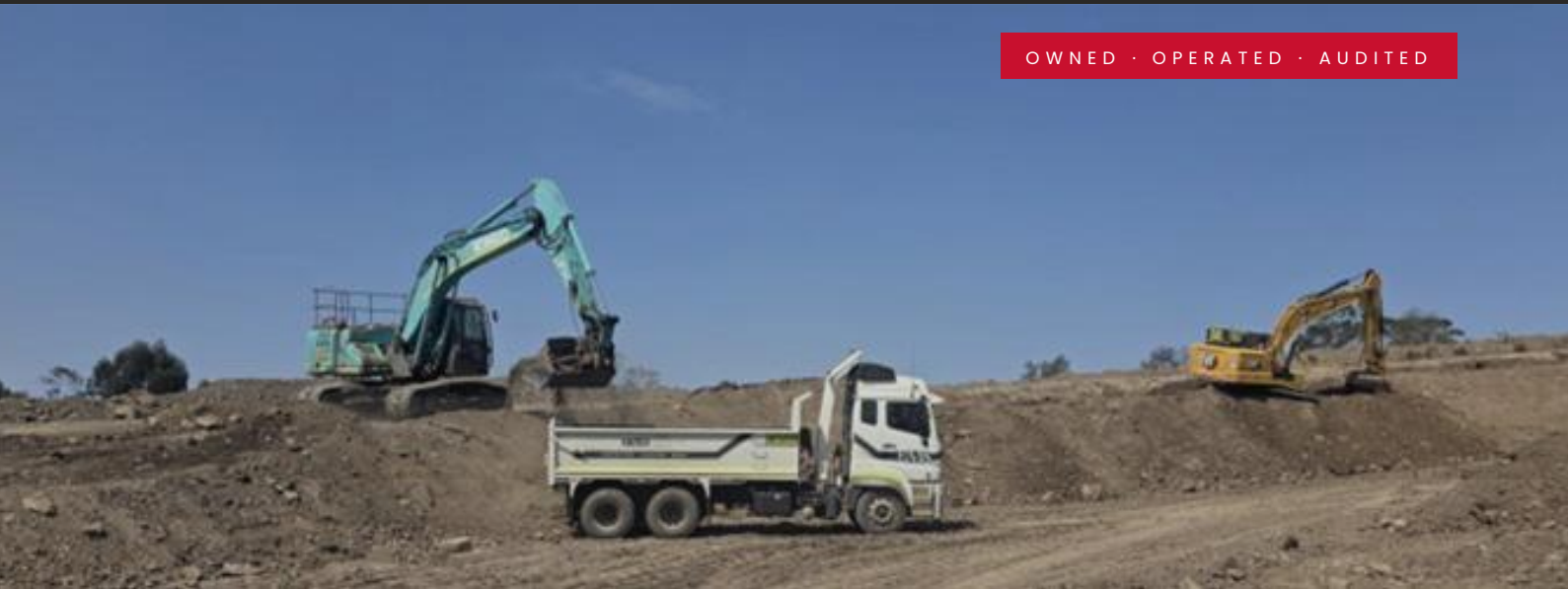
viii **Attachments**
Augers · slasher · roller ·
drum wheel · jackhammer ·
mulcher · broom · grabs.

Site-ready plant · operated under a documented system.

Maintained, compliant *mine-gate ready.*

Every asset on the EMS fleet is operated under a documented system. Daily pre-starts, scheduled servicing and compliance records are held against the EMS asset number – so plant arrives at site verified, isolated and ready to work.

OWNED · OPERATED · AUDITED



Pre-starts.

i

Daily pre-starts logged against the EMS asset number. Defects flagged before plant goes on shift, with corrective action recorded against the asset.

Servicing.

ii

Manufacturer-aligned scheduled servicing with brake testing, energy flow analysis and high-risk work tickets verified by the supervisor.

Compliance.

iii

Isolation, lockout, fire suppression and guarding fit-out audited against mine standard. Guard audits on file per asset item.

Records.

iv

Compliance records and operator competency held current. A quarterly equipment lookahead is maintained per asset.



Section four

Local matters.

*EMS is grounded in the **communities** we work in – backing local people, building lasting **partnerships** with the suppliers and specialists who make every job possible.*

IN THIS SECTION

- i* Community involvement
- ii* Strategic partnerships
- iii* Local supplier commitment

Giving back, partnering with trusted suppliers and being an active member of our region

Built on regional relationships.

EMS is proudly based in Mackay and built on strong regional relationships. We are part of the communities where our people live, work, raise families and support local organisations.

As a local business servicing the mining, civil and maintenance sectors across Central Queensland, our role extends beyond project delivery – we contribute to the strength and resilience of the regions that support us.

SECTION 04 · I

Sponsorships and local support.

2025

COMMUNITY · LOCAL SUPPORT



LOCAL PLATINUM

Nebo Town Party

Helping the community deliver its flagship local event in 2025 – supporting a town that supports our people.

CONTRIBUTION

Donated time + fencing and funding.



PLATINUM SPONSOR

Obsession AllStars Cheerleading

Backing local athletes, families and youth participation across the region – encouraging discipline, teamwork and confidence.

BACKING
Athletes & youth participation.



MAJOR SPONSOR

Special Kids Christmas Party

An inclusive, memorable Christmas event for children and families – a chance to give back through something families remember.

IMPACT
Inclusive community event.

We support initiatives that strengthen community participation, create meaningful local experiences and give back to the regions that support our business.

Partnerships that add *practical* value.

We value strategic partnerships that strengthen our capability, improve project outcomes and give clients access to trusted products, technical knowledge and site-based solutions.

Each partnership is selected to complement our service streams and support safer, more reliable maintenance outcomes across mining, civil and industrial environments.

SECTION 04 . II *How a partnership flows to a site.*



COMMUNITY · PARTNERSHIPS



PARTNER · CONVEYOR PERFORMANCE & RELIABILITY
Martin Engineering.



Our partnership with Martin Engineering strengthens our capability in conveyor maintenance, material handling and operational reliability — supporting safer, cleaner work areas with practical, site-focused solutions that improve performance and reduce material loss.

- i Reduced carryback**
Less material loss along the belt return.
- ii Less spillage**
Cleaner transfer points and load zones.
- iii Cleaner work areas**
Safer access, easier housekeeping.
- iv Improved belt performance**
Better tracking, longer service life.



PARTNER · HOSE PRODUCTS & TECHNICAL SUPPORT
Spot On Hosing.



Our new relationship with Spot On Hosing expands our ability to support clients with high-quality hose solutions for mining and industrial applications — improving access to reliable products, responsive supply and technical support, with a broader range of site needs covered by EMS.

- i Reliable hose supply**
Mining & industrial grade products on hand.
- ii Technical support**
Specification advice tied to site needs.
- iii Responsive supply**
Less downtime waiting on parts & fittings.
- iv Single point of contact**
Engage EMS for a broader range of needs.

Partnership that adds practical value

Local first.

Where it stacks up on safety, quality and value.

— *Mackay · Central Queensland · Local first.*

We actively seek to work with local businesses across Mackay and Central Queensland — wherever local supply meets the standards we require for safety, quality, value, reliability and performance.



Procurement commitments.

i

Invite local suppliers to quote.

Suitably qualified Mackay and Central Queensland suppliers are invited to participate in the work.

ii

Weight broader regional value.

We consider local employment and reinvestment alongside price, capability and delivery.

iii

Develop long-term relationships.

We build reliable, ongoing supplier relationships — not one-off transactions.

Evaluation criteria.

<p><i>i</i> Safety.</p> <p>Site-fit, compliant, certified.</p>	<p><i>ii</i> Quality.</p> <p>Specification met, consistent.</p>	<p><i>iii</i> Value.</p> <p>Competitive, fair, fit for purpose.</p>
<p><i>iv</i> Reliability.</p> <p>On time, on spec, dependable.</p>	<p><i>v</i> Performance.</p> <p>Proven in field, accountable.</p>	<p><i>vi</i> Local impact.</p> <p>Regional employment + reinvestment.</p>

Local First - where it stacks up on safety, quality and value.



Licensed today. *Building for certification.*

As EMS continues to grow, we are strengthening our systems to support larger, more complex project delivery across *mining, civil and industrial* environments.

QUEENSLAND BUILDING & CONSTRUCTION
COMM. *LICENSED*

QBCC Licensed
Contractor



EMS holds QBCC licence coverage for applicable building and construction work in Queensland.

LICENCE NUMBER
15253606

LICENCE CLASS/ES
Builder Low Rise

QUEENSLAND GOVERNMENT *LICENSED*

Electrical *Contractor*

LICENCE NUMBER
#52334

ISO 9001 *ALIGNMENT*



Quality management

ITPs, hold points, QA records & corrective action – consistent project delivery.

ISO 45001 *ALIGNMENT*



WHS management

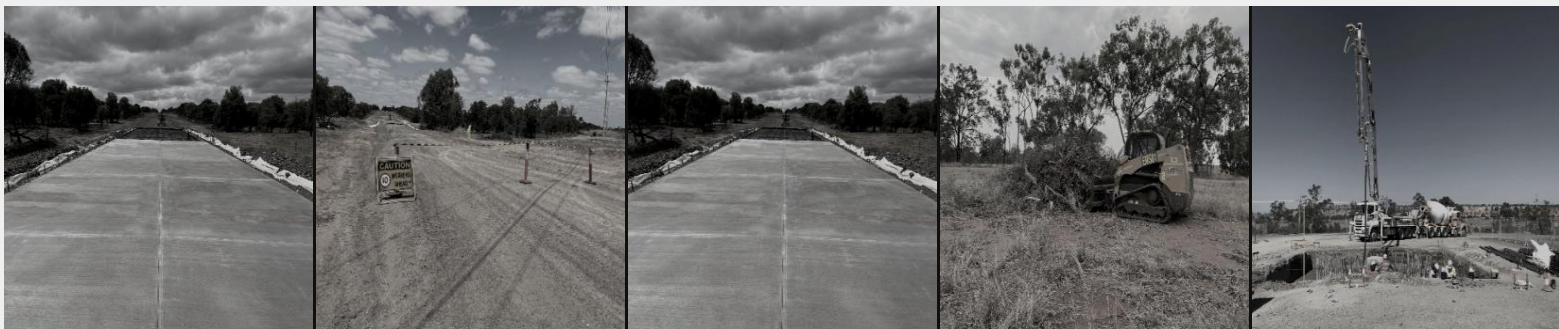
SWMS, JSEAs, Take 5s, incident reporting & risk controls across active sites.

ISO 14001 *ALIGNMENT*



Environmental management

Spill response, waste tracking, environmental controls & rehabilitation support.



EMS

EVOKE MAINTENANCE SERVICES

Let's build *together.*

— TRUSTED BY —

Our Major Clients



BHP



GLENCORE



THIESS

— GET IN TOUCH

Contact Us.

PHONE

(07) 4951 1922

EMAIL

admin@emsaustralia.net

WEB

www.emsaustralia.net

OFFICE

12 Heidi St, Paget QLD 4740



Scan to view our capability statement